



P.O. Box 489, Kfar-Sava 44104 Israel
Tel: +972 9 7425985, Fax: +972 9 7427598
E-mail: info@4med.co.il

The Rosenberg Macro Dermatome Skin Graft Knife



Instructions for use



Ver. A



P.O. Box 489, Kfar-Sava 44104 Israel
Tel: +972 9 7425985, Fax: +972 9 7427598
E-mail: info@4med.co.il

"Rosenberg" Macro Dermatome - Skin Graft Knife Instructions for use

Loading the blade

Slide the locking bar (1) toward the dermatome handle.

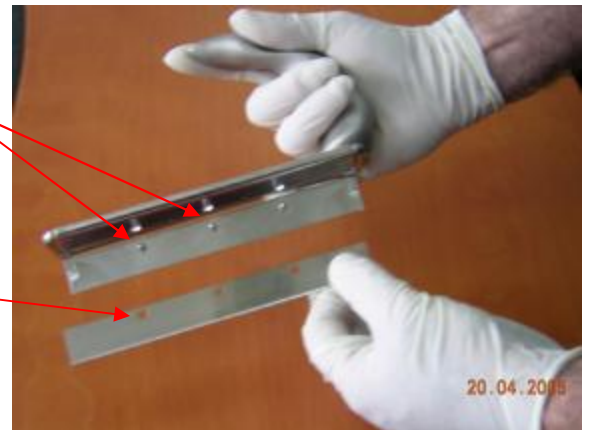
1



Push on the pins to open the dermatome bottom.

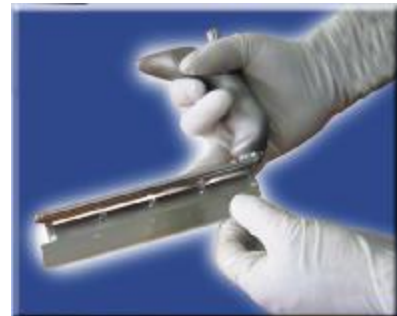
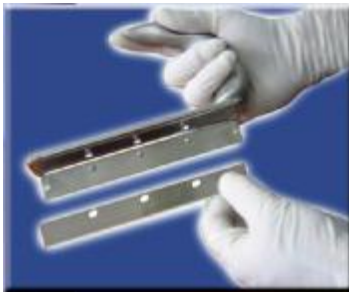
Load the Dermatome blade onto the Dermatome. Use the 3 locating pins (2) to be inserted into the holes (3) in the blade.

2



3

Close the bottom of the Dermatome and push back the locking bar (1)





P.O. Box 489, Kfar-Sava 44104 Israel
Tel: +972 9 7425985, Fax: +972 9 7427598
E-mail: info@4med.co.il

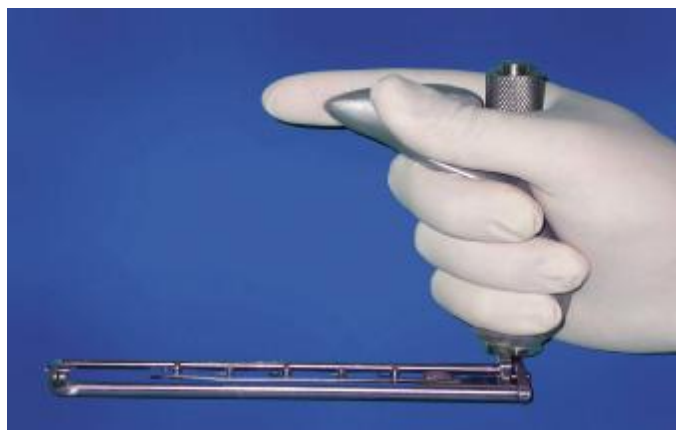
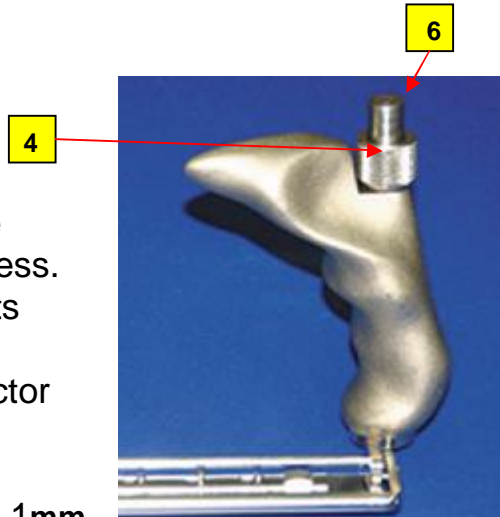
Adjust the graft thickness.

Use the adjustment dial (4) on top of the handle in order to adjust the graft thickness. Each line on top of the dial (5) represents 1/10 mm of skin graft thickness. Full circle of the dial will move the protector and change the thickness in 1/2 mm

Each line on the indicator (6) represents 1mm of the graft thickness.

Using the Dermatome.

Hold the Dermatome with your pointing finger at the front. This gripping maintain clear operative field and provide accurate control.





P.O. Box 489, Kfar-Sava 44104 Israel
Tel: +972 9 7425985, Fax: +972 9 7427598
E-mail: info@4med.co.il

Instructions for Cleaning.

Open the Dermatome as described above and remove the blade using forceps .

Clean after each procedure by rinsing in distilled water.

*** Do not use saline on the Dermatome at any time.**

Remove remaining debris with soft bristle brush.

Carefully wipe the entire unit dry after cleaning.



Sterilization.

The Dermatome should be sterilized prior to each meshing procedure.

Lubrication should not be used on this instrument.

Each institute should establish the efficacy of its sterilizing procedure by appropriate method, such as the use of commercially available chemical or biological monitors. This instrument may be autoclaved or flash autoclaved.